

Ultimate care for all you can wear.

AquaTouch® protects against the transmission of viruses and bacteria.

AquaTouch®

The global Art of Wet-Cleaning

powered by

GIRBAU

&

SEITZ



AquaTouch® now also with disinfection according to RKI and products which have been certified with European EcoLabel.



EU Ecolabel: DE/039/010



WE WANT YOU TO STAY HEALTHY



EN14476
European Norm

Professional disinfecting Textile Care in Water



Professional Textile Care in Water – a range of opportunities.

AquaTouch® opens up a wide range of business opportunities as it makes it possible to process textiles requiring standards and wet cleaning with the same equipment. Garments look and feel like new after processing.

If you ever thought about switching to **Textile Care in Water** or like to enhance your business to this offer but fear the trouble with the preparation, the conversion and the effort such as the costs among all the other work and duties you have to do in your daily tasks. And you didn't find the time to inform yourself about and expose with **Textile Care in Water**.

No problem, we settled this for you. To lose nothing of your precious time we composed **AquaTouch®** – a all-around carefree package according to your needs and requirements. We calculate and organize for you, advise and support you and we supply the complete equipment that is necessary for your special situation so you can operate professional **Textile Care in Water**.

THE BENEFITS:

- **Enhanced cleaning power with water-soluble stains**
- **Easy and Safe System**
- **Brighter colours softer, fresher fabrics**
- **Garments with superior hygiene**
- **Get rid of chemical smells from solvents**
- **Cut investment costs and control the cost of cleaning**
- **Build up the versatility of your business and create added value for your customers**
- **Make your business sustainable by passing the value of corporate social responsibility and your concern for the environment on to your customers.**

And we equip with everything you need for Professional Textile Care in Water



Procedures



Products



Washer



Dryer



Finishing
Equipment



Dosing
Technology

HS
SERIES



GS
SERIES

Machines

ED
SERIES



Dosing systems



Products



We offer a complete solution that is just made for you:

Royalty-free.

A constantly-evolving concept to adapt to the appearance of new fabrics and fibres.

Specific process, programmes and detergents for every kind of fabric and stain with excellent wash quality.

And you can offer a **„1-hour service“** from receipt to issue. With **AquaTouch®**, fast cleaning at a high level is possible.



AquaTouch®
The global Art of Wet-Cleaning

powered by **GIRBAU** & **SEITZ**

Planing

Specific Programs and Processes

Washing Machine and Dryer

Finishing Equipment

Detergents and Dosing Equipment

Installation

Training

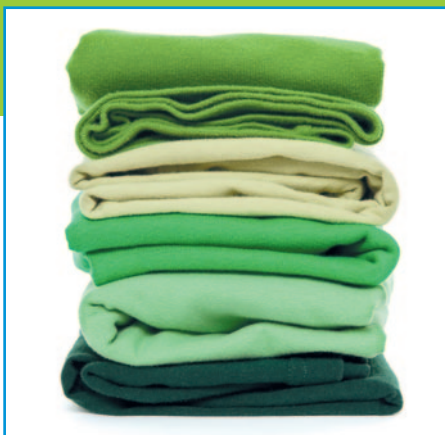
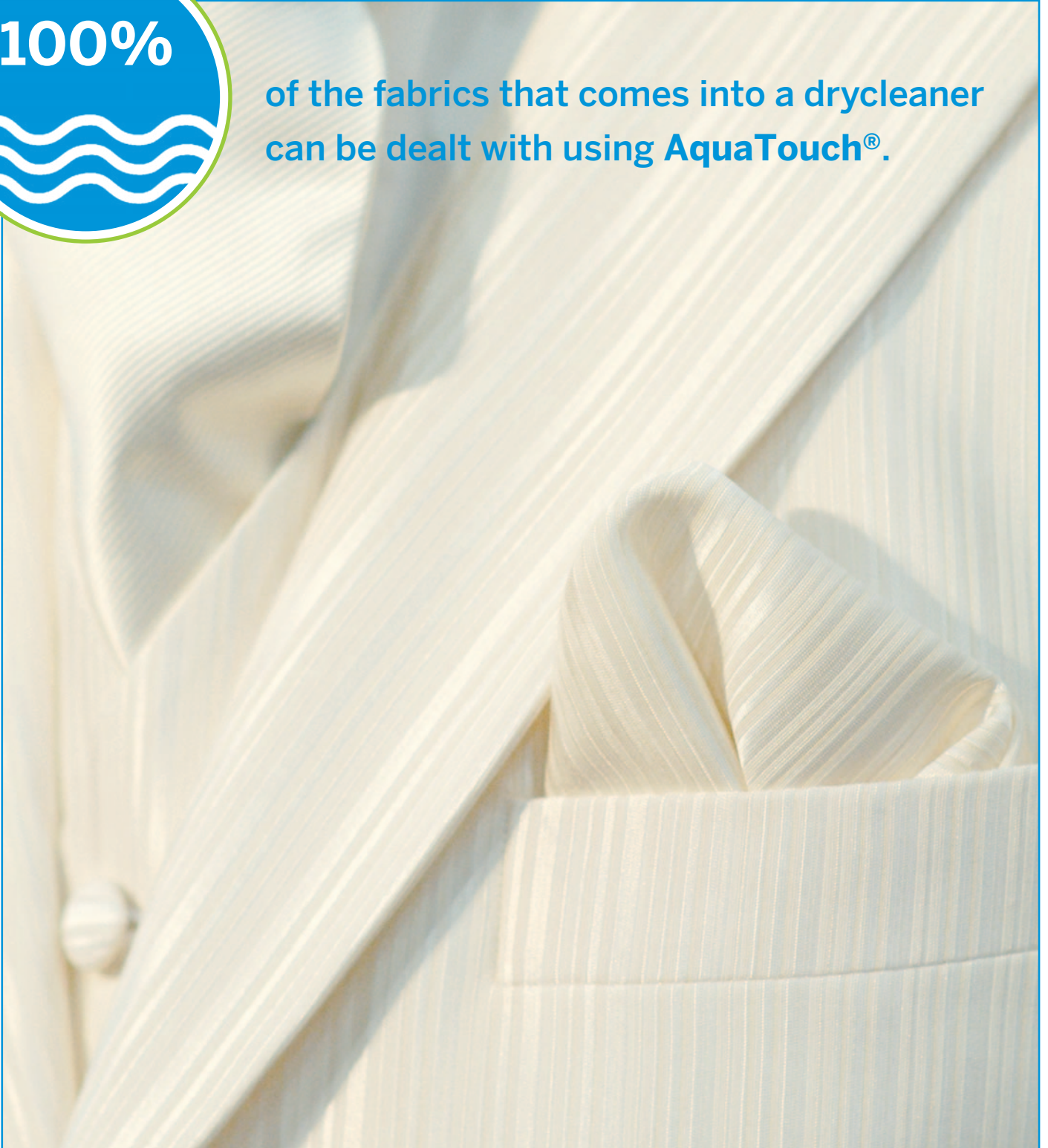
Warranty

Specialized After Sales Service

Maintenance Contract



of the fabrics that comes into a drycleaner
can be dealt with using **AquaTouch®**.



Add value to your business

Cut operating costs

savings – 20/25%

Energy

Water (-70%)

Pre-spot time

Detergents

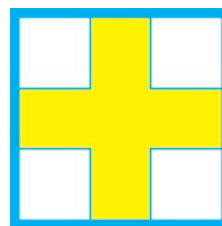
Finishing time

Cut initial investment

savings – 30% or greater

Equipment

Installation



Ecological and disinfecting process:

**70% less water consumption
compared dry cleaning to
cleaning with AquaTouch®**

100% biodegradable products

Non-allergic products

Hygienic disinfecting process



ROBERT KOCH INSTITUT



**Expand your offerings
and switch to a promising,
modern hygienic and
ecological cleaning system.**

AquaTouch®

The global Art of Wet-Cleaning

powered by

GIRBAU & SEITZ



AquaTouch® KIT A: GS7013 and ED260
Dosing system and product starter set



AquaTouch® KIT D: GS7032 and ED660
Dosing system and product starter set



AquaTouch® KIT B: GS7018 and ED340
Dosing system and product starter set



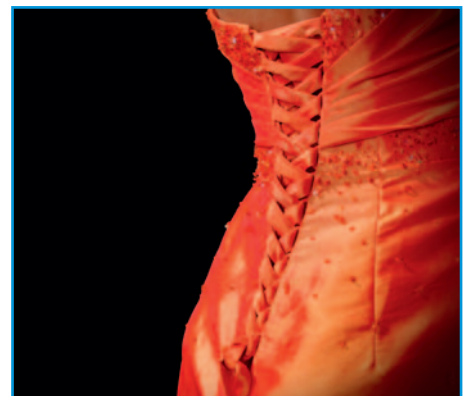
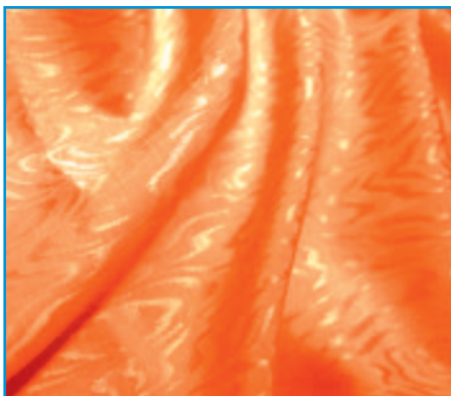
AquaTouch® KIT E: HS6040 and ED900
Dosing system and product starter set



AquaTouch® KIT C: GS7024 and ED460
Dosing system and product starter set



AquaTouch® KIT F: HS6057 and ED1250
Dosing system and product starter set



Girbau and Seitz joint and created with **AquaTouch®** a “Textile Care in water solution package”, in which customers can find everything for their own needs.

With **AquaTouch®** you can find the right answer to your questions. Pre-selected products and machines make it easy for you to decide what might be the best for your business.

AquaTouch® Machines for Textile Care in Water ...

AquaTouch® offers you six different washing machines from the GS or the HS series with capacities from 14 kg to 63 kg. The load ratio in the AquaTouch® process is 1:17 to 1:20, resulting in a machine capacity of 6.5 to 53 kg.

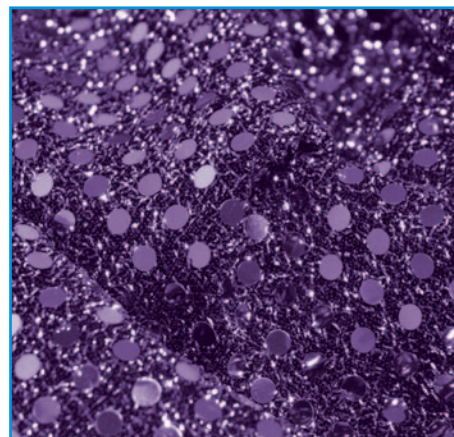


... together with special developed products for Professionals



AquaTouch® products for Textile Care in Water, enable effective cleaning treatment of a wide variety of different textile articles such as delicate garments, suits, coats made from natural and synthetic fibres and also those made from highly sensitive materials like wool and silk.

There is nothing else you need!



The AquaTouch® Machines



A delicate touch for fabrics

Stamped drum openings to avoid sharp edges. The most delicate treatment for the most exclusive garments.



Waterfall effect

A system of perforated blades gets the water moving without the need to move the garments.



Automatic Temperature setting

Precise temperature control so as not to damage delicate items.



Versatile, intuitive control and Technology



- + Easy to program**
- + Flexibility**
- + Control advanced parameters**

Total control and setting of all parameters in the wash cycle allows the most demanding processes to be carried out safely and efficiently with delicate fabrics.

The textile care in water machine controls allow you to:

- Control rotation of fabrics inside the drum to limit mechanical action.
- Fill and empty the bath with the drum stopped.
- Set temperature gradients for heating and cooling.
- Dose 4 products at once.
- Set 6 adjustable bath levels.
- Set 4 wash rotation speeds.



The AquaTouch® product line cleans, revives, refreshes your fabrics and gives them a gentle touch.

AquaTouch® Essential

Viva EcoCare

Special detergent for any kind of wool and silk designed for **AquaTouch®**

- Active and passive fibre and colour care
- Protection against felting and shrinkage



All our **Eco Products** have been awarded the EU Ecolabel.

Viva EcoSoft

Avivage and softening agent designed for **AquaTouch®**

- Pleasant soft and elastic handle
- Improved gliding properties in pressing and ironing
- No water repellent action
- Appealing fresh fragrance
- To be used in the finishing bath

Viva EcoAcet

Citric acid-based neutralising agent designed for **AquaTouch®**

- Optimum pH-buffer
- Colour protection
- Non-hazardous handling

Viva Milox

Colour safe bleach designed for **AquaTouch®**

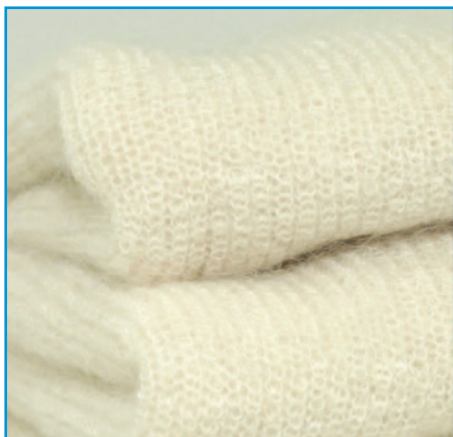
- Highly active liquid oxygen bleach already from 05 °C
- perfect cleanliness and hygiene
- Specially for coloured and white fabrics

Viva EcoTop

Special sizing and finish designed for **AquaTouch®**

- Provides a soft, elastic and voluminous handle
- Optimum fibre care
- Prevents felting and shrinkage
- Reduced ironing and steamfinishing operations
- To be used in the finishing bath
- Excellent wrinkle relaxation





The washing efficiency of all our machines: High speed spin washing machines (up to 1,000 rpm). 100% free standing (no need for any kind of anchoring). A quality washing process optimizing water, energy and chemical products. A saving in the drying process due to its spin factor of over 350–400 G. Wide-ranging possibilities with an easy and intuitive programming (see controls). Reduced maintenance.

HIGH SPEED WASHER EXTRACTORS



GS-7013

Capacity 14 kg (1/9); 13 kg (1/10)
Electric, hot water and steam heating
Diameter of drum 620 mm
Volume of drum 126 dm³
Dimensions: 1325 x 796 x 887 mm



GS-7032

Capacity 36 kg (1/9); 32 kg (1/10)
Electric, hot water and steam heating
Diameter of drum 825 mm
Volume of drum 320 dm³
Dimensions: 1053 x 1294 x 1500 mm



GS-7018

Capacity 19 kg (1/9); 17 kg (1/10);
Electric, hot water and steam heating
Diameter of drum 700 mm
Volume of drum 173 dm³
Dimensions: 1404 x 868 x 962 mm



HS-6040

Capacity 44 kg (1/9); 40 kg (1/10);
Electric, hot water and steam heating
Diameter of drum 900 mm
Volume of drum 395 dm³
Dimensions: 1794 x 1390 x 1455 mm



GS-7024

Capacity 27 kg (1/9); 24 kg (1/10);
Electric, hot water and steam heating
Diameter of drum 765 mm
Volume of drum 239 dm³
Dimensions: 975 x 1470 x 1225 mm



HS-6057

Capacity 63 kg (1/9); 57 kg (1/10);
Electric, hot water and steam heating
Diameter of drum 1080 mm
Volume of drum 569 dm³
Dimensions: 1925 x 1570 x 1493 mm



Multipurpose results in versatility and profitability



Viva Blue

Liquid booster for synthetic oils and greases

- excellent removal of industrial greases and oils
- highly active emulsifier
- anti-foaming
- solvent-free

AquaTouch Clean Advanced



Viva Pris

Liquid basic detergent and booster for temperatures from 40 – 90 °C

- quick fibre-swelling without aggressive alkali
- high dispersing capacity on pigment soil
- excellent complexing capacity, also in case of heavy metals (Fe, Mn, Cu)
- suited for white and coloured textiles made from cotton and mixed fabric



Viva Lana

Neutral gentle detergent for delicate fabrics

- Disinfection according to §18 IfSG scope of action AB at 40 °C
- To be used for washable outerwear, personal protective equipment and other special textiles
- High productivity with optimal garment care
- Combined with **Viva Geniox**, safe disinfection of delicate goods will be reached at even low temp



Viva Uni

Neutral multi-purpose detergent

- Without alkali
- Particularly high enzymes component
- Excellent dispersing capacity on grease- and pigment-bound soil
- Excellent complexing capacity, also in case of heavy metals (Fe, Mn, Cu)



Viva Duox

Low temp colour safe bleach and disinfectant designed for **AquaTouch®**

- Disinfection according to §18 IfSG scope of action A and B at 40 °C
- Low dosage and low processing cost
- Safe disinfection of delicate fabrics




Viva Envia

Ecological fine and colour detergent for low temperatures

- suitable for all types of washable textiles
- the optical brightener ensures brilliant white and clear colours
- contains effective surfactants, enzymes and greying inhibitors for low washing temperatures up to 40 °C
- White goods should be washed at 40–60 °C by using a bleach
- Viva Envia has been awarded the EU Ecolabel (DE/039/010)



AquaTouch® prevents damage to decorative borders and trimmings which often consist of a variety of materials including appliqués like pearls or sequins which might not be resistant to a cleaning process in harsh solvents.



The AquaTouch® product range cleans, avivates, freshens up your textiles and gives them a soft voluminous feel.



Viva Starch

Liquid starch, suited for mangling

- best starching effect at lowest dosage
- excellent ironing capacity
- polymer-based synthetic starch
- very good storage ability
- to be used in the finishing bath



Viva Protect LT

Emulsion for water and oil repellent finish

- fluorocarbon resin with reticulation
- best protection at 30 – 40 °C
- very good finishing properties
- preserves active cellular breathing of membranes and textiles



WetXWash

Completely built detergent and pre-brushing agent for leather wet-wash designed for **AquaTouch®**

- WetX Wash can be used as completely built detergent or pre-brushing agent, containing greasing agent components apart from detergent substances
- the gentle but highly active detergent components solubilize stains and fixed soil
- natural and synthetic oils provide leather regreasing during the wash.
- WetX Wash is also suited for leather-textile combinations



WetXFinish

Regreasing agent with handle-improving components for all kind of leather designed for **AquaTouch®**

- WetX Finish is a special liquid regreasing agent which provides equal regreasing of the leather due to high components of natural and synthetic oils
- high-grade caring components provide the leather with a pleasant soft handle and deepening of the colours
- WetX Finish is also suited for leather-textile combinations



AquaTouch®
The global Art of Wet-Cleaning
powered by **GIRBAU & SEITZ**

AquaTouch® Clean Advanced



AquaTouch® PRE

AquaTouch® Pre
enable simple, quick and
allround spot removal
even at delicate fabrics.



UNIVERSAL PRE-BRUSHING AGENT

Viva Combi

is a **neutral pre brush agent**, that removes grease-bound, albuminous- and pigment- bound soil already in the first phase of the cleaning cycle. The concentrate must be diluted 1: 3 with water.



SPRAY FOR GENTLE REMOVAL OF GREASE BOUND STAINS

Maxx Spray

is a powerful, **fast and effective acting stain-removal** agent based on an innovative, naturally active, grease solubiliser and convinces this ability by its supreme grease-solubilizing power.

Maxx Spray can be used for local pre-treatment of particularly difficult grease and pigment soiling. This spray can be used for all white and coloured textiles, for example: on shirt collars and sleeves – it leaves a pleasant fresh fragrance.

Maxx Spray is sprayed directly on to the stain and should remain in contact for no longer than 10 to 15 minutes.



GENTLE CARE SPOT PRODUCTS...

The spotting agents in the coloured bottles are compatible with one another and can be flushed out in pre-spotting. When using in post-spotting, rinse out with water or by means of the steam pistol.



PRE-SPOTTING AGENTS

Hydret 1

is a spotting agent that is especially suited for quick removal of grease stains.

By using **Hydret 1**, other staining agents like paint, lacquer, adhesives, ballpoint colour smears, tar, nail polish, lipstick and similar substances can be removed quickly and simply.

Hydret 2

is a spotting agent which is suited for quick removal of albuminous stains.

By using **Hydret 2**, other staining agents like blood, albumen, food residues, fish and meat gravies, dairy products, beer, chocolate, sweat, pigment soil, urine and similar substances can be removed quickly and simply.

Hydret 3

is a spotting agent which is suited for quick removal of tannin stains.

By using **Hydret 3**, other staining substances like coffee, tea, wine, carbonated coloured drinks, fruit juice, fruit, liqueurs, tobacco, grass, perfume, medicines and similar substances can be removed quickly and simply.



Facilitates the work process of stain removal uncommonly. Try and you will see.



The AquaTouch® Dryers



A delicate touch for fabrics

Stamped drum openings to avoid sharp edges. The most delicate treatment for the most exclusive garments.



Automatically adjustable rotation speed

Total control to avoid harm to woolen items.



Much more pleasant workplaces

Door with double glass and insulated panels ensure higher performance and limit the emission of heat into the drycleaner's premises. We create pleasanter, more ergonomic work spaces.



Precise drying thanks to control of residual dampness

As the dryer is stopped at just the right time, this avoids overheating delicate fibres and makes ironing easier.

A new Dimension in Drying Technology



+ Technology

+ Intuitive

+ Versatility

+ Safety

Optimal drying shortens ironing time for items such as overcoats and jackets. Professional Control incorporates the philosophy behind the Girbau Inteli concept.

Learning and programming are very fast thanks to the system of icons.

Efficient for your business – Gentle on your clothes: **ECODRY**

ED dryers incorporate a number of new technologies designed to achieve highly efficient drying cycles while treating fabrics with the greatest of care.



ED260

Volume 260 l;
Capacity 1/25–1/18:
10,5–14,5 kg



ED660

Volume 660 l;
Capacity 1/25–1/20:
26,4–33 kg



ED340

Volume 340 l;
Capacity 1/25–1/18:
13,5–19 kg



ED900

Volume 900 l;
Capacity 1/25–1/20:
36–45 kg



ED460

Volume 460 l;
Capacity 1/25–1/18:
18,5–25,5 kg



ED1250

Volume 1250 l;
Capacity 1/25–1/20:
50–62,5 kg

All dryers have a stainless steel drum and are equipped with an electric or gas heating system and steam.

AquaTouch®
The global Art of Wet-Cleaning
powered by **GIABAU** & **SEITZ**

The transflow system (radial and an axial flow) provides an easy penetration of the hot air through the linen and making the most of their temperature. The door system, with its double glazed dual pane, ensures a better optimisation of energy consumption and a lower working environmental impact. The Care drum system ensures that the fabric never comes into contact with sharp edges. The holes in the drum are pressed out. The moisture control system is accurate and reliable. Communication system between the inverter, motor and microprocessor ensures a longer life of the dryer.

The possibility of programming the drum rotation speed in each phase of the drying program. The filter is self-cleaning and the fan requires minimum maintenance. The wide door makes loading and unloading easy. During the process, the Eco, Soft and half load can be manually activated.

Finishing: Details Matter

The impeccable finish transmits an image of your business and inspires confidence in your customers.



S-ASF-B

Ironing table with suction and and airblow. The blow function creates a cushion of air over the table for ironing items with relief.

Ideal for ironing and care for delicate linen such as wool and silk, avoiding problems like deformation.

Features a steam boiler with built-in pump for heating and steaming the plate and hand iron.

STP1-TE

Pneumatic functioning of the pants top extensor and of the clamps. Transversal extension of the pants top with mechanical blocks at the required size.

Disappearing front pad and pocket pads with four different pressure adjustments. Possibility of adjusting the tension of the pants top and the pressure of the clamps. Automatic descent of the clamps to the level required by the length of the pants.

Electric heater to supply dry steam on the steaming head. Supplied with piece-counter.



Tension multi-form Finisher

For quick ironing with spectacular results in garments like jackets, coats, dresses, blouses, skirts, shirts and so on.

Combines stretching action with the air flow and the steam effect to achieve unbeatable results.

Form finisher for high production capacity. Highly versatile, it can cope with thick jackets and/or fine fabrics like those of shirts.

AquaTouch® Dosing Systems by SEITZ



Even the best products cannot have their full effect and performance if they are not dosed correctly or are introduced at the wrong time in the process. This special dosing system is flexible, easy to install and will help you to give better results, save energy and money.

- This innovative dosing system combines maximum reliability with flexibility.
- Low maintenance and high reliability make this system the model for quality standards in dosing technology.
- Combined with very low maintenance, it is a must for dosing liquid detergents.

Features of the AquaTouch® dosing system:

Dosing of up to 13 products in single machines or up to seven washing machines (machine sizes dependent).

- Reliable performance
- Complete traceability
- Low maintenance
- Optimum safety
- Perfectly fitting system

Extensions/accessories:

- Production data acquisition
- Remote maintenance, W-LAN, LTE router
- Collecting trays
- Program selector switch



RELIABLE

- Highest dosing accuracy
- Long service life with minimum maintenance

HIGH-QUALITY MATERIALS

All materials used are tested to ensure the highest possible quality. This applies to the entire dosing system and all accessories.

COMPACT

Can be installed in the smallest of spaces compared to other systems.

FLEXIBLE

The basic model is designed for seven products and one machine and can be expanded to 13 products for up to seven machines.



photos: Brightwell, Fotolia, Girbau, iStockphoto, E. Meuer (Seitz), Panthermedia, Vivid Details

We offer you six different packages to choose from : one wet cleaning machine of the GS or the HS series and one dryer of the ED series from Girbau, plus a dosing system and a 5 x 5l canister product starter set from Seitz.



YOUR OWN SELECTION:

• AquaTouch® Kit:

• Extension dosing technology:

• Machine extension:

• Product expansion:

• Finishing technology:

- Trouser topper
- Form finisher
- Ironing table
- Spotting table

• Shop design:

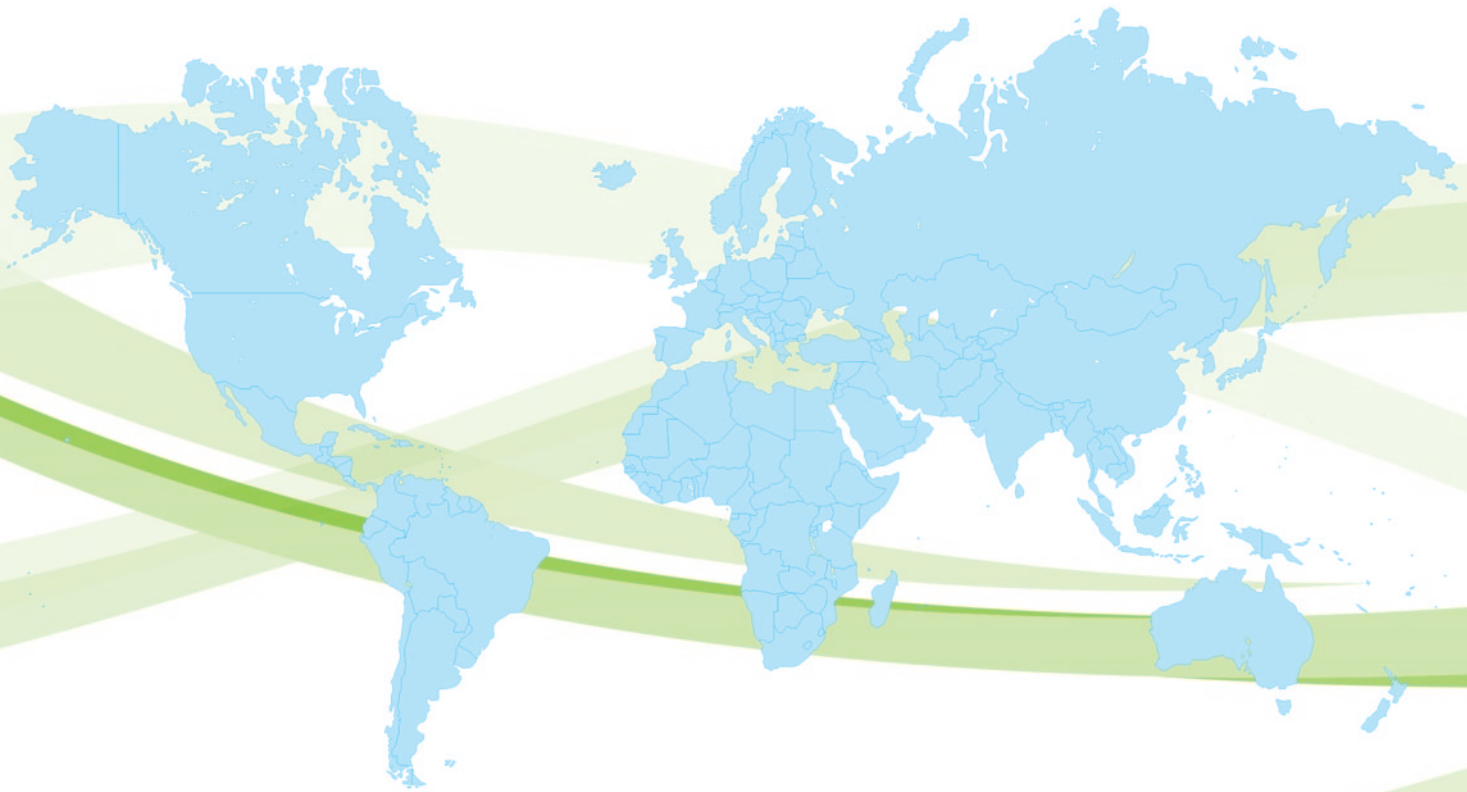
- | | |
|----------------------|----------------------|
| • Counter | • Lighting |
| • Counter background | • Mirror surfaces |
| • Shop window | • shelves |
| • side walls | • Coffee counter etc |

AquaTouch®

The global Art of Wet-Cleaning

powered by

GIRBAU & **SEITZ**



GIRBAU

Girbau, SA.

Crta de Manlleu, Km. 1
08500 Vic (Barcelona) Spain
Tel. (+34) 902 300 359
Mail: comercial@girbau.com
Tel. INT (+34) 93 886 2219
Mail: sales@girbau.com

www.girbau.com

SEITZ

The fresher company.

Seitz GmbH

Gutenbergstr. 1-3
65830 Kriftel
Germany

Tel.: 06192 99 48 0
Fax: 06192 99 48 99

www.seitz24.com



Excellent quality

Professional disinfecting textile care in water